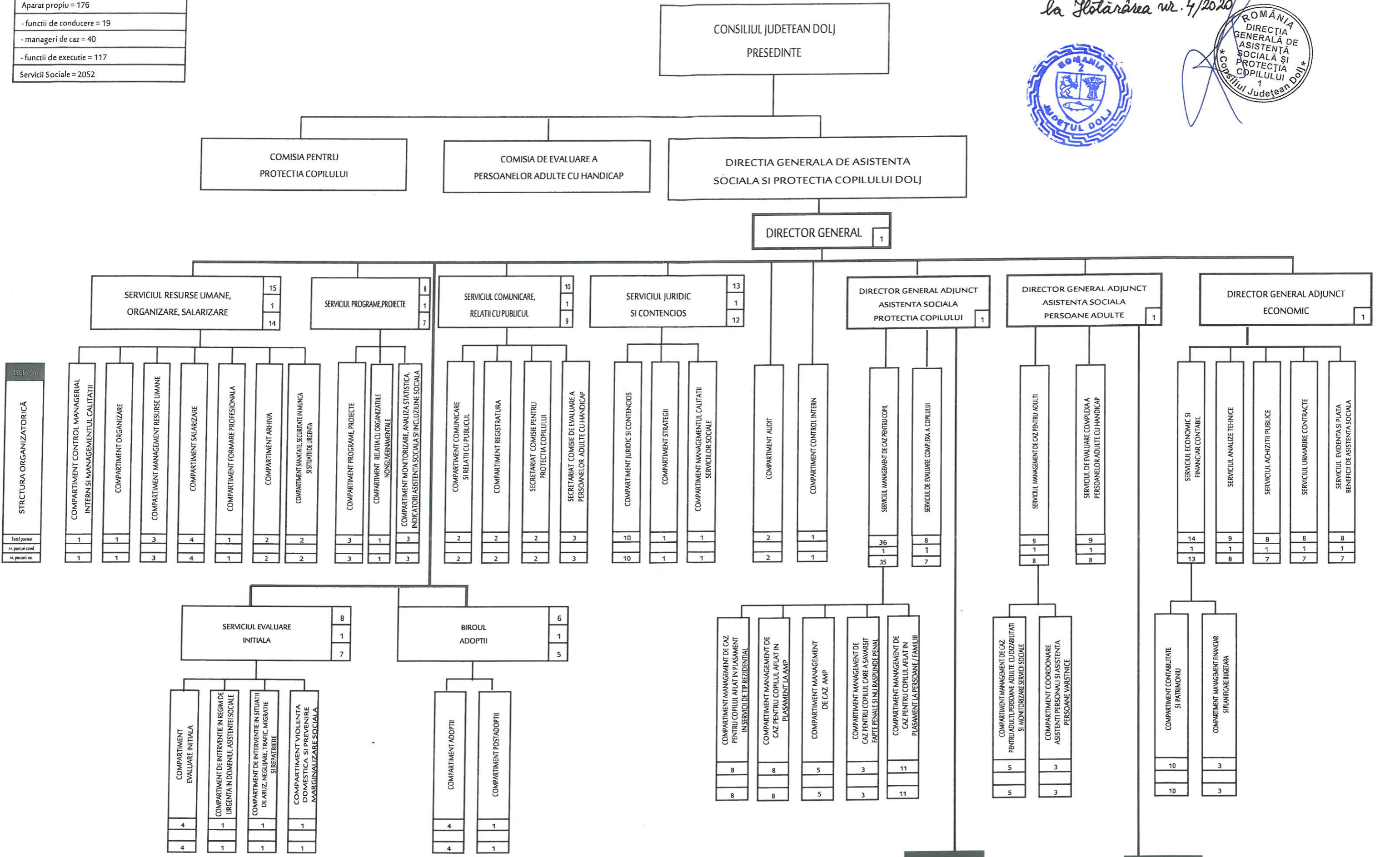


Număr total de posturi = 2228
Aparat propriu = 176
- functii de conducere = 19
- manageri de caz = 40
- functii de executie = 117
Servicii Sociale = 2052



STRUCȚURA ORGANIZATORICĂ

Număr total de posturi in cadrul serviciilor sociale= 2052
- numar posturi conducere = 52
- numar posturi executie = 1630
- numar posturi executie AMP = 350
- numar posturi executie APP = 20

DIRECTOR GENERAL ADJUNCT
ASISTENTA SOCIALA
PROTECTIA COPILULUI



DIRECTOR GENERAL ADJUNCT
ASISTENTA SOCIALA
PERSOANE ADULTE

